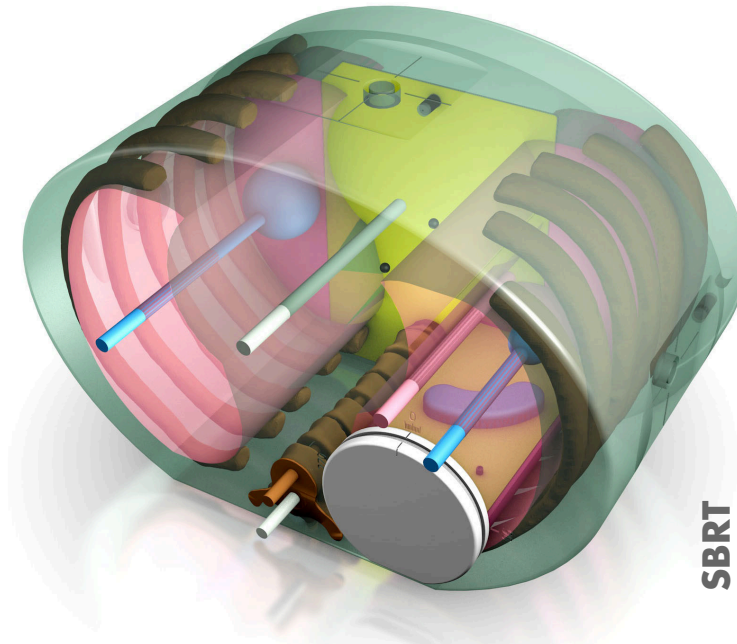


E2E[®] SBRT Phantom

Model 036A-CVXX-xx



"END-TO-END" SBRT TESTING SOLUTION

The high dose per fraction associated with SBRT necessitates a high degree of accuracy in target localization and dose delivery. Small errors can result in significant under treatment of portions of the tumor volume and over dosage of nearby normal tissues. The E2E[®] SBRT Phantom provides a means to check the entire treatment chain during commissioning and routine QA.

The Model 036A-CVXX-xx* is an anthropomorphic thorax body containing articulated spine, ribs, and lungs. All materials are suitable for use in kV and MV energies.

The thorax section contains two lung tumor volumes with ionization chamber cavities in the center of each target*. The phantom also includes a lung insert with an irregular-shaped lung target. The proximity of the lung target to the vertebral body allows clinicians to measure high-resolution dose distribution to the target and dose to the spinal chord in a single delivery. A transversal slice of the thorax enables high-resolution dose distribution measurements to the vertebral body and vertebral chord. Ready-cut films with integral registration holes are available for both the lung insert and transversal slice.

The surface of the thorax body is machined with concentric circle targets and alignment marks for daily system checks.

An optional abdominal section (Model 036-01) with 3D spine anatomy for film and nanoDot[™] dosimetry is available separately. It can also accommodate the CBCT Image Quality phantom (Model 062QA-35). Model 036-01 provides extra bolus to allow dose assessments with the abdomen due to non-coplanar beams.

Features

- Thorax with articulated spine, ribs and lungs
- Optional Abdomen with film insert
- High Resolution Anthropomorphic Characteristics
- Center point fiducial and offset target for daily system checks
- Ideal for commissioning an SBRT program
- Excellent test environment for Monte Carlo dose calculation verification
- Supports use and testing of Image Guidance capabilities
- Facilitates SBRT planning and delivery for Lung, Liver, and Spine treatments

* Customer must specify chamber at time of purchase. Refer to CIRS cavity codes at www.cirsinc.com/support for corresponding CV number.

2428 Alameda Avenue Suite 316 • Norfolk, Virginia 23513 • USA
Tel: 800.617.1177 • 757.855.2765 • Fax: 757.857.0523

WWW.CIRSSINC.COM

CIRS

Tissue Simulation & Phantom Technology

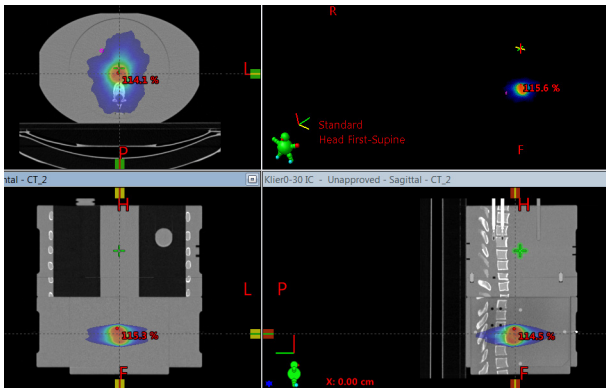


Image 01 (1)

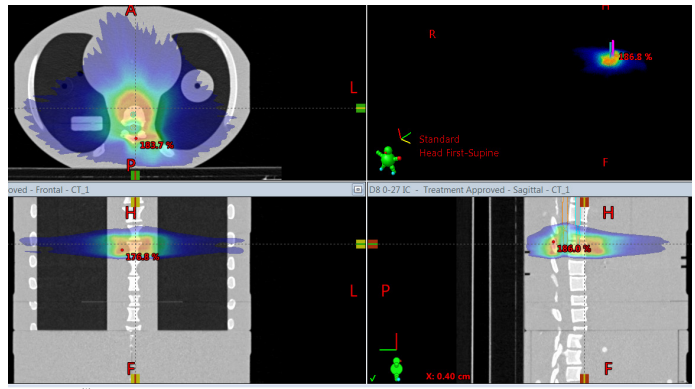


Image 03 (1)

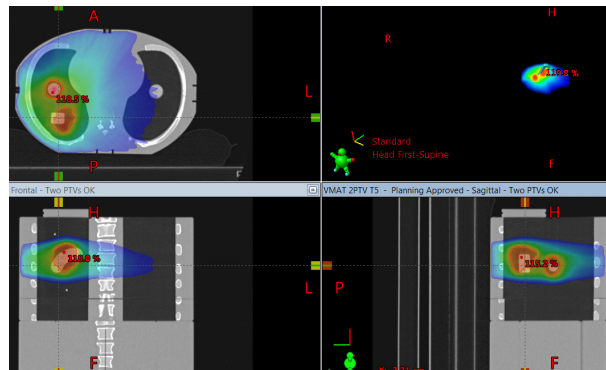


Image 02 (1)

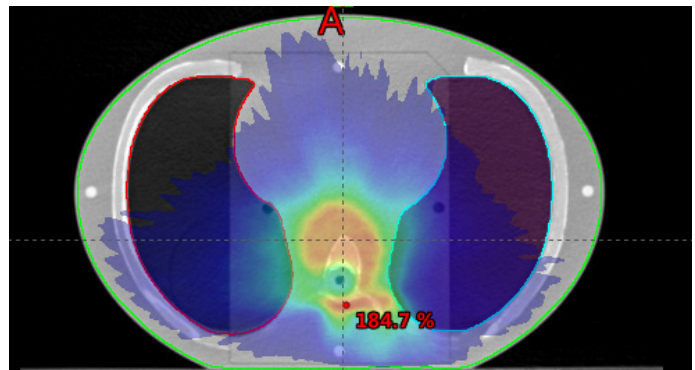
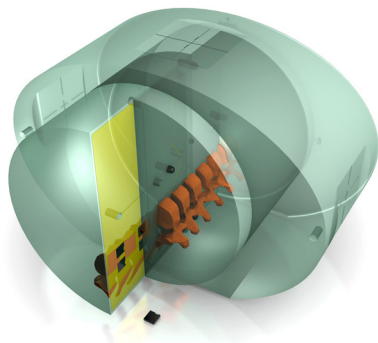


Image 04 (1)

(1) Images provided by UZ Leuven, "Evaluating a versatile new-generation anthropomorphic phantom for Stereotactic Body Radiation Therapy", E35-2122

SPECIFICATIONS

DIMENSIONS:	16.5 cm x 30 cm x 20 cm 6.5" x 11.8" x 7.9"
PHANTOM WEIGHT:	~7 kg (15 lb)
MATERIALS:	Proprietary Epoxy Resins



Model 036-01 SBRT Abdomen Phantom with 3D spine for film and nanoDot™ Dosimetry (cutaway to show internal structure)

MODEL 036A-CVXX-xx INCLUDES

QTY	COMPONENT DESCRIPTION
1	E2E® SBRT Thorax Phantom drilled for customer specified chamber*
1	Sample Precision Cut EBT3 Film Kit for Model 036A
1	User Guide
1	Foam-Lined Carry Case
-	48-Month Warranty

* Customer must specify chamber at time of purchase. Refer to CIRS cavity codes at www.cirsinc.com/support for corresponding CV number.

OPTIONAL ACCESSORIES

PART NO.	COMPONENT DESCRIPTION
036-01	SBRT Abdomen Phantom with 3D spine for film and nanoDot™ Dosimetry (includes foam-lined carry case)
062QA-35	CBCT Image Quality Phantom
158200-02-05	Precision Cut EBT3 Film Kit for Model 036-01 (Set of 5)
158200-02-10	Precision Cut EBT3 Film Kit for Model 036-01 (Set of 10)
158200-04-05	Precision Cut EBT3 Film Kit for Model 036A (Set of 5)
158200-04-10	Precision Cut EBT3 Film Kit for Model 036A (Set of 10)

