

Stereotactic Needle Biopsy Training Phantom

A compressible biopsy training phantom that won't leak

The CIRS Stereotactic Needle Biopsy Training Phantom is a disposable training tool and practice medium for mammographic needle biopsy procedures. The phantom also serves as an excellent quality assurance device for stereotactic systems and should be used whenever a new system is installed or repaired to insure accurate needle placement. The phantom can be used to perform the localization accuracy test in the American College of Radiology's stereotactic breast biopsy accreditation program.

The phantom body is shaped to represent a partially compressed breast. This allows the user to easily compress the breast to 4.5 cm thickness for optimum imaging. The shape also enables the phantom to be used in systems where the patient is either prone or sitting. The phantom is made from a proprietary gel with a physical consistency similar to human tissue and, since the gel is a non-flowing material, it won't leak out when punctured.



Model 013

Features

- Compressible
- Does not leak when punctured
- Contains various sizes of dense masses for biopsy
- Contains calcification clusters for visualization and biopsy
- Anthropomorphic shape for accurate simulation of breast compression
- Simulates needle resistance
- Palpable lesions
- Physical consistency similar to human tissue
- Compatible with both stand alone and add-on stereotactic biopsy systems
- Works on digital systems

The gel is surrounded by an elastic skin-like membrane, which enables palpation of the embedded masses and provides needle resistance.

Embedded within the phantom are numerous solid masses in a range of sizes. These radiographically visible masses can be biopsied multiple times. The masses are colored black for easy visualization of a successful biopsy. These solid masses

are randomly positioned so each phantom provides a unique training experience. Two calcification clusters are positioned within the medial transverse plane at the right and left edge of the phantom. These calcifications can be biopsied or used for QA checks on the mammography system. To aid in visualizing the location of the calcifications, the two groups are each clustered around a white but

radiographically transparent mass.

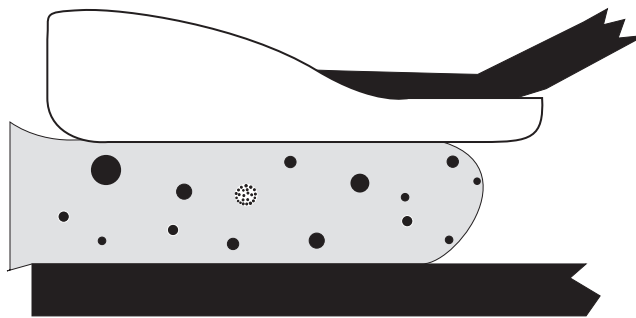
The stereotactic training phantom offers an easy, low cost option to create a relaxed learning environment. The phantom can be reused multiple times with no special storage requirements. The CIRS Model 013 Stereotactic Needle Biopsy Training Phantom provides a simple training solution for mammographic needle biopsy procedures.

Model 013 Specifications:

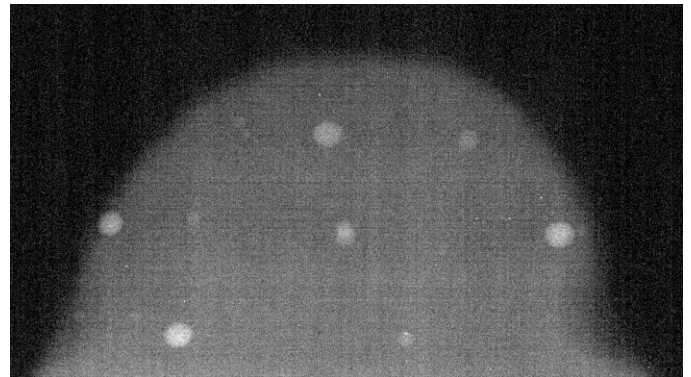
Targets	Shape	Color	Size Range	Quantity	Positioning
Dense Masses	Round	Black	3-6 mm	12	Random
Microcalcifications	Round	Orange	300 - 350 microns	2 clusters	Mid-Plane on right and left sides

Note: Calcifications are grouped around radiographically transparent white mass

Overall Size	10 cm x 16.5 cm x 5 cm thickness
Phantom Volume	530 cc
Phantom Weight	0.5 kg (1.1 lbs)



Model 013 positioned on bucky



Mammography image of Model 013

Ordering Information

Part No.	Qty	Component Description
013	1	Stereotactic Needle Biopsy Phantom

Specifications and descriptions subject to change without notice.