

# Radiography Fluoroscopy QA Phantom

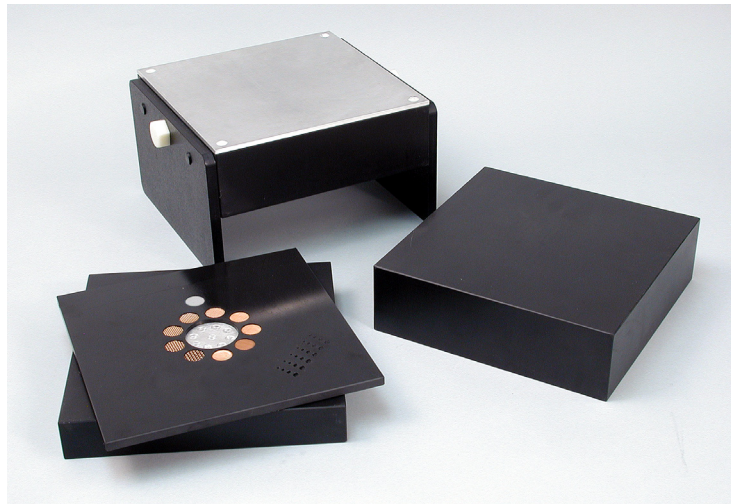
*Also suitable for CR/DR Systems*

The CIRS Model 903 Radiography / Fluoroscopy QA Phantom is designed to provide physicians with an opportunity for a comprehensive review of their Radiography / Fluoroscopy facility, image quality programs.

The Radiography / Fluoroscopy QA Phantom can be used for initial QA assessment and routine monthly QA testing to help ensure patients are receiving the best possible X-ray examinations.

The CIRS Model 903 is manufactured from PMMA equivalent epoxy that offers the same X-ray attenuation properties as acrylic with significantly greater durability.

The overall phantom measures 25 cm wide x 25 cm long x 20.7 cm high and consists of three attenuation plates, one test object plate



**Model 903**

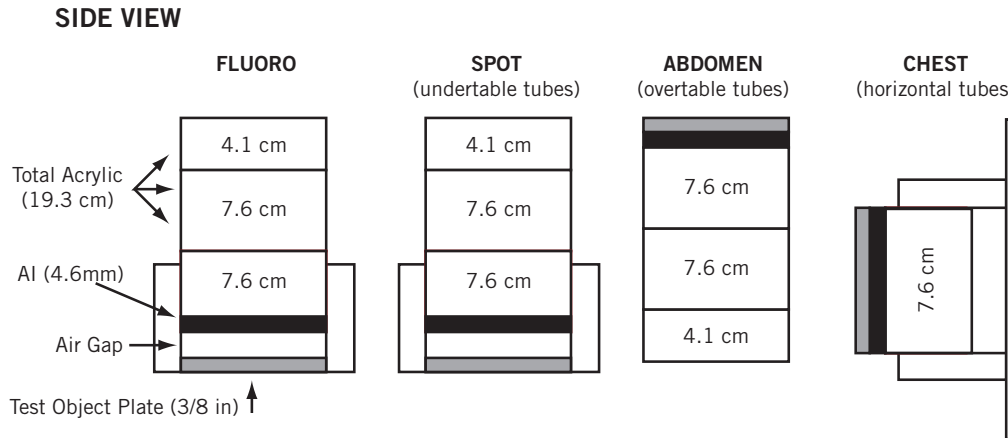
and a detachable stand for easy, reproducible set-up. Test objects include high-resolution copper mesh targets from 12 – 80 lines per inch,

two separate contrast-detail test objects.

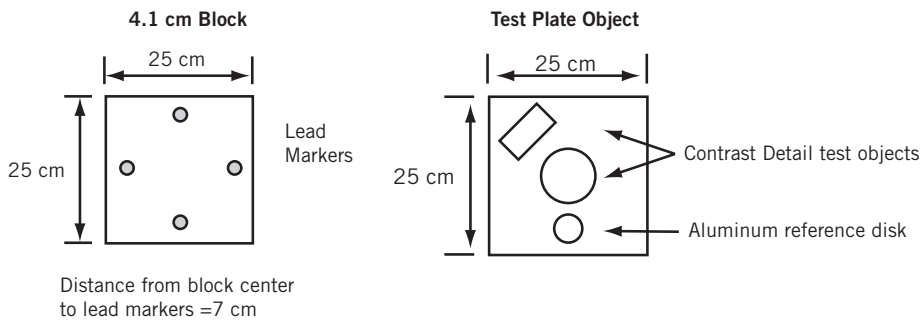
Model 903 Phantom Includes		
Model No.	Quantity	Description
903-01	1	Test Object Plate
903-02	1	4.1cm Block with Lead Markers
903-03	1	7.6cm Block with Aluminum Plate & Detachable Support Legs
903-04	1	7.6cm Block
Model 903 Optional Accessories		
903-05	1	Optional Artery Slot Block
903-CS	1	Optional Case for ACR Radiography Fluoroscopy Accreditation Phantom

# Model 903 Specifications:

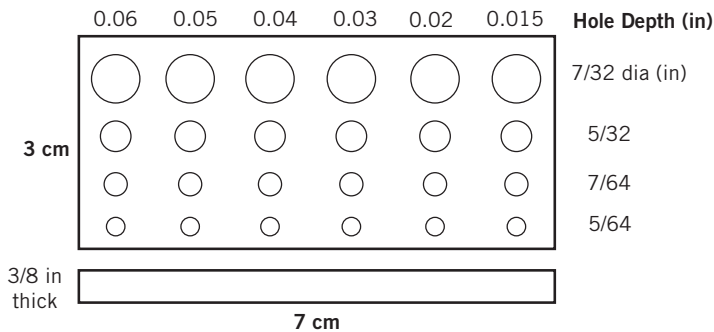
## Radiography/Fluoroscopy QA Phantom



**TOP VIEW**



**CONTRAST-DETAIL TEST OBJECT**

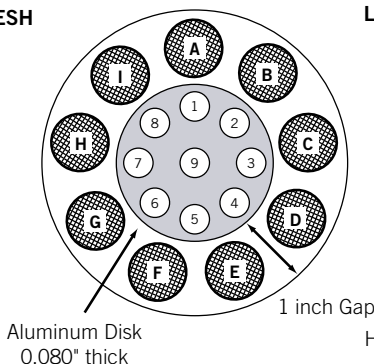


**HIGH CONTRAST MESH**

LINES PER INCH

- A-80
- B-12
- C-16
- D-20
- E-24
- F-30
- G-40
- H-50
- I-60

Meshes arranged in incremental order  
Lines angled at 45°



**LOW CONTRAST HOLES**

IN ALUMINUM DISK

HOLE DEPTHS

- 1 - 0.068
- 2 - 0.049
- 3 - 0.035
- 4 - 0.025
- 5 - 0.018
- 6 - 0.0126
- 7 - 0.0091
- 8 - 0.0063
- 9 - 0.0040

Hole Diameter = 0.375"