

# Triple Modality 3D Abdominal Phantom

Model 057



## ***IMAGE FUSION / REGISTRATION • SCANNING TECHNIQUES • BIOPSY***

Abdominal imaging is useful for diagnosing disease and monitoring treatments. The Model 057 Triple Modality 3D Abdominal Phantom provides a representation of a small adult abdomen and can be imaged under CT, MR and ultrasound. This feature makes the phantom a useful tool for a variety of applications such as image fusion studies, developing imaging protocols, training of different scan techniques and system testing, validation and demonstration.

The Model 057 simulates the abdomen from approximately the thorax vertebrae (T9/T10) to the lumbar vertebrae (L2/L3) using simplified anthropomorphic geometry. The materials provide contrast between the structures under CT, MRI and ultrasound.

Internal structures include: liver with lesions and portal vein, two partial kidneys each with a lesion, partial lung surrounding the liver, abdominal aorta, vena cava, simulated spine and 6 ribs. A muscle layer and outside fat layer surround these

structures and plastic end caps make the phantom durable enough for extended scanning.

The phantom can also be used for image-guided interventional procedures. Each lesion can be punctured 3-5 times.

### ***Features***

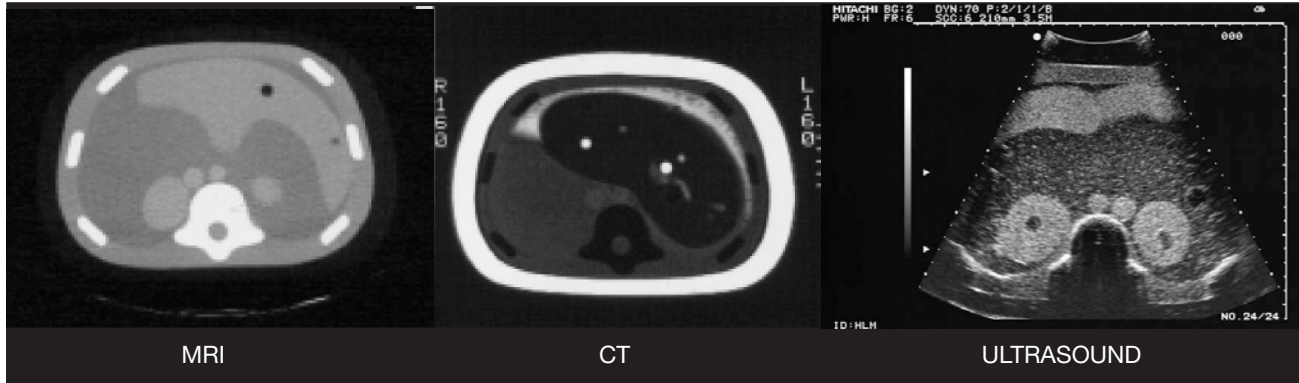
- Demonstrate CT, ultrasound and MRI scan techniques
- Assess image fusion algorithms
- Test new equipment
- Optimize imaging protocols
- Improve performance of freehand abdominal biopsies

2428 Alameda Avenue Suite 316 • Norfolk, Virginia 23513 • USA  
Tel: 800.617.1177 • 757.855.2765 • Fax: 757.857.0523

**[WWW.CIRSINC.COM](http://WWW.CIRSINC.COM)**

**CIRS**

Tissue Simulation & Phantom Technology



SPECIFICATIONS

<b>DIMENSIONS:</b>	28 cm x 12.5 cm x 20 cm (11" x 5" x 8")
<b>PHANTOM WEIGHT:</b>	24 lbs. (8.9 kg)
<b>MATERIALS:</b>	Housing: ABS Phantom: Proprietary Gels

MODEL 057 INCLUDES

QTY	COMPONENT DESCRIPTION
1	Triple Modality 3D Abdominal Phantom
1	User Guide
-	6 Month Warranty

The Model 057 Contains Internal Organs:

- Liver with 6 lesions (2 each small, medium and large)
- (2) Kidneys (1 medium lesion each)
- (1) Spine
- (1) Partial lung
- (1) Portal Vein
- (1) Vena Cava
- (1) Aorta
- (6) Ribs
- Surrounding Soft Tissue (2 Large Lesions)

