

Upgrade/Load TRIO Programs

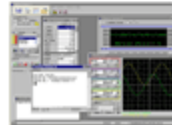
I. Load Trio Motion programs into Controller

1. Make sure that Motion Perfect 2 is installed on the PC, which is to be connected to the controller.

Motion Perfect 2 can be installed from the Trio Motion CD.

Welcome to the Trio Motion CD

Install Motion Perfect 2
Install motion application
development program




Also, Motion Perfect 2 can be downloaded from Trio web site:

http://www.triomotion.com/tmt2/sitefiles/software_tools/sw_tools_overview.asp

(Note: In order to download the software from TRIO website the user needs to register with TRIO, which is free)

2. Make sure that TrioPCMotion is installed on the PC which is to be connected to the controller.

TrioPCMotion can be installed from the CIRS Motion Control CD that comes with the phantom.

Name	Type
 Install_TrioPCMotion_1_2_9_2.exe	Application

Also, TrioPCMotion can be downloaded from Trio web site:

http://www.triomotion.com/tmt2/sitefiles/software_tools/sw_tools_overview.asp

Trio PC Motion

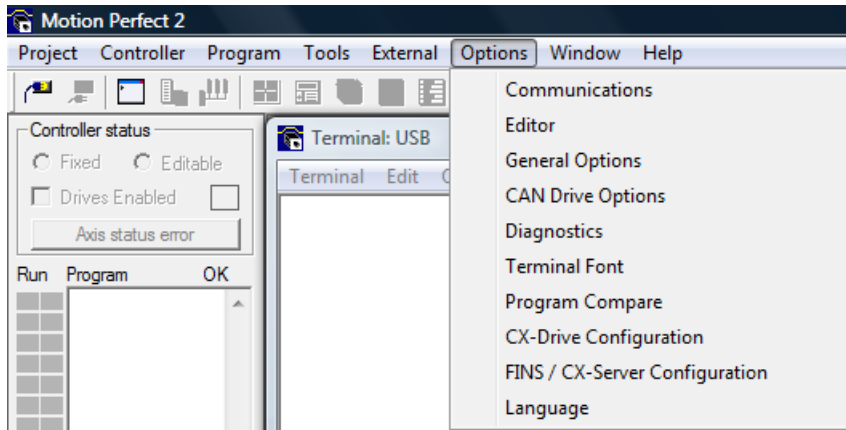
The Trio ActiveX component provides a direct connection to the Trio MC controllers via a PCI bus, USB, Serial or Ethernet link. It can be used in any Windows programming language supporting ActiveX (OCX) components such as Visual Basic, Visual C, C++ Builder, etc.

Compatible with: MC224, PCI208, MC206(X), MC302X, MC302-L, MC302-K, Euro209, Euro205(x), MC216, MC204, MC202, MC2

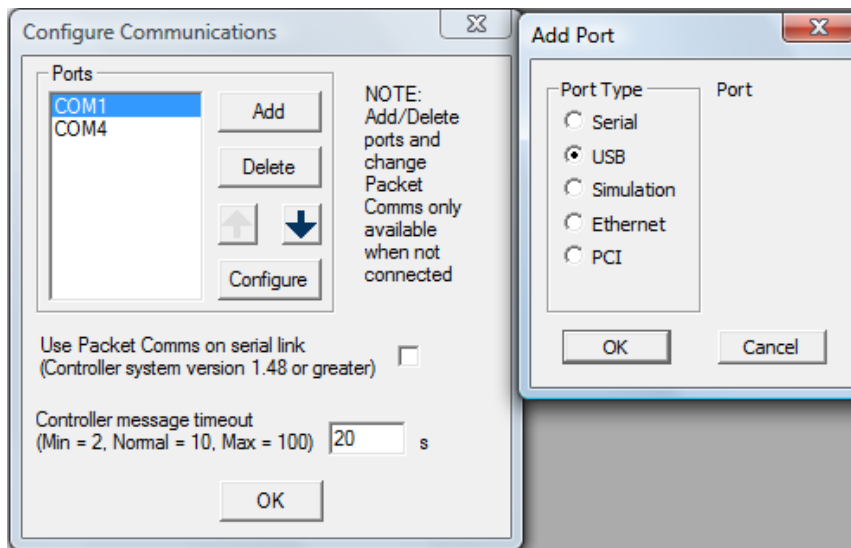


(Note: In order to download the software from TRIO website the user needs to register with TRIO, which is free).

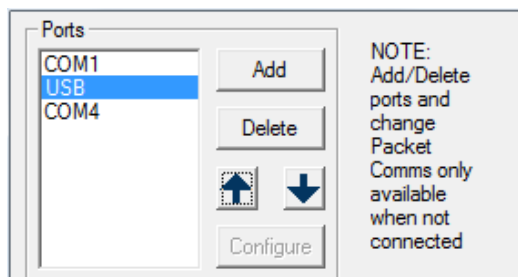
3. Start Motion Perfect 2.
4. Go to *Options – Communications*.



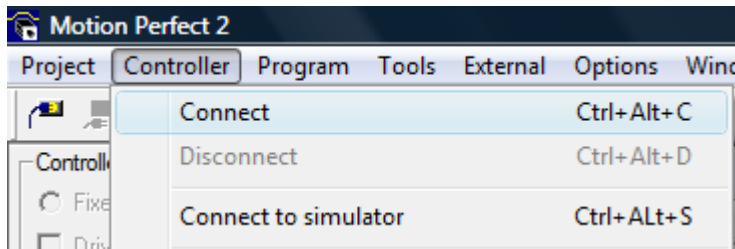
5. If USB is not listed in *Ports Box* click *Add* and select USB then press *OK*.



After USB is added to the *Ports Box* use the arrows to put the USB port at the top of the priority list. This will speed up the connection for cases when there is more than one port available as the USB port will be checked first.

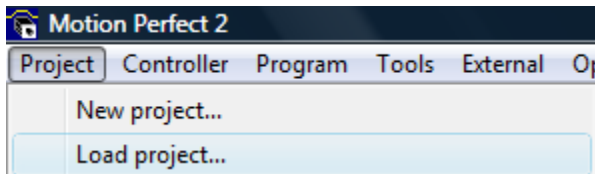


6. Go to *Controller – Connect*.

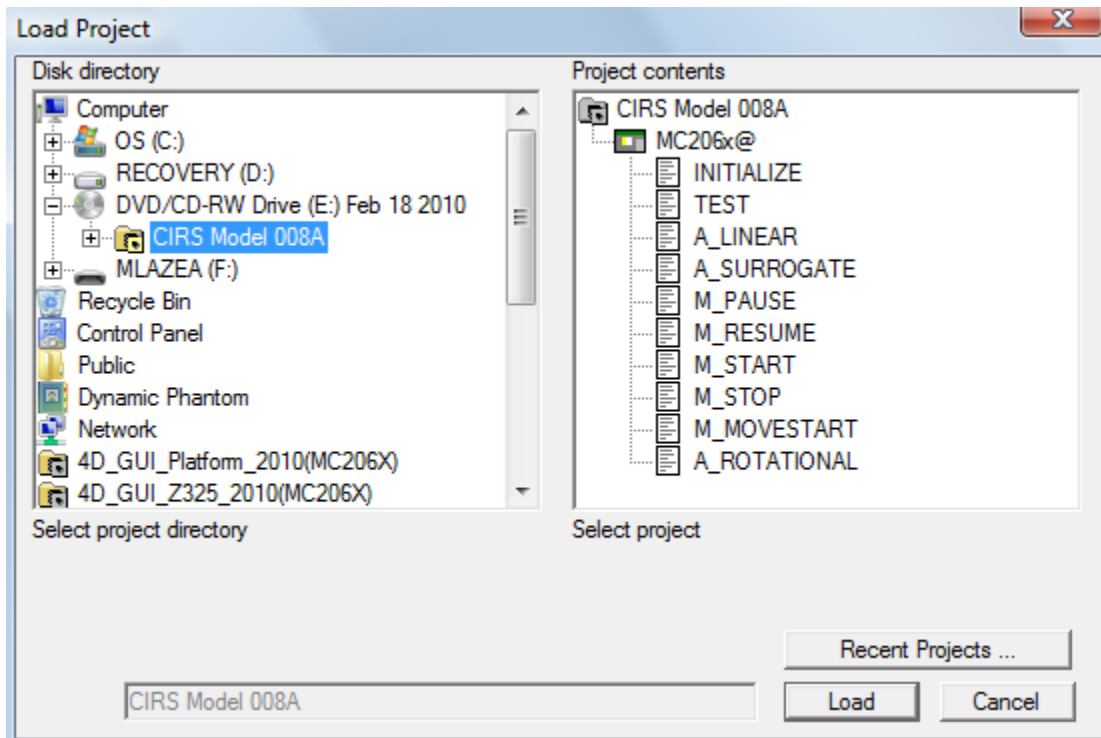


Once the connection is established press *OK*. Press *OK* again when the message *Project Checked OK* is displayed in the *Check Project* window.

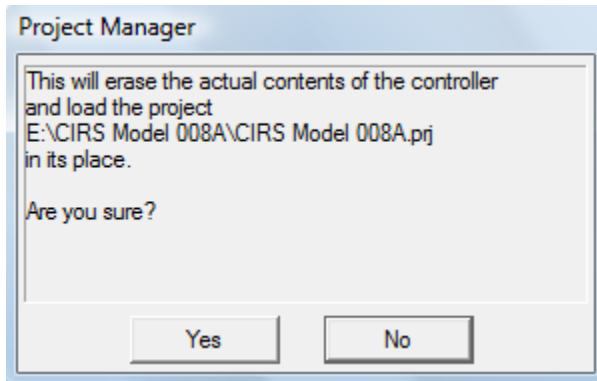
7. Go to *Project – Load project...*



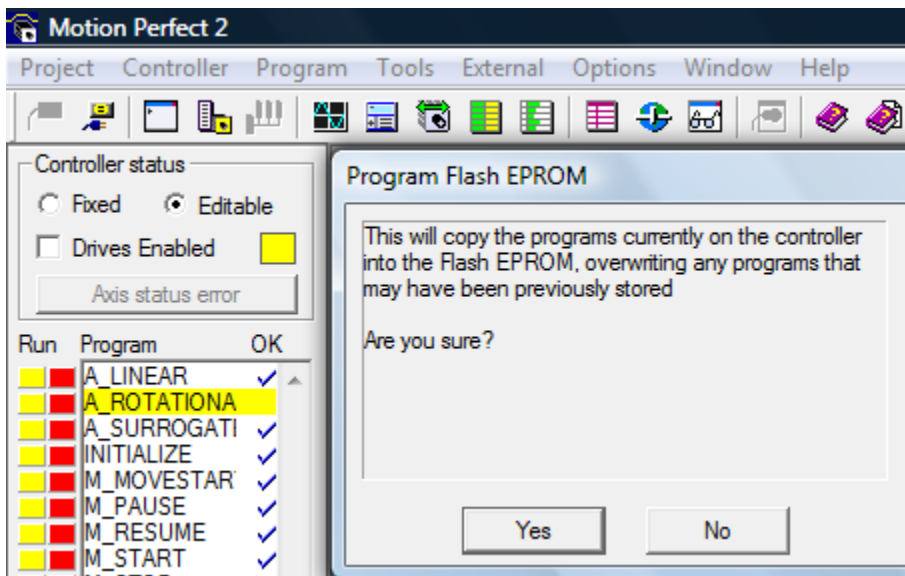
Select the desired Trio project from the CD/CDs containing Trio Projects that was/were shipped with the phantom and press *Load*.



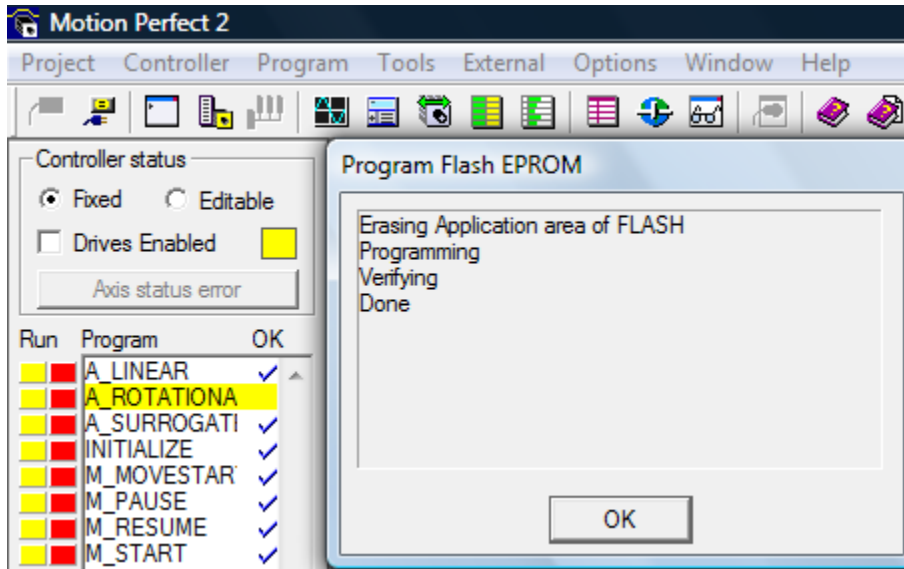
8. Press Yes to acknowledge the message in *Project Manager window*.




Optional: To lock the Trio Project for editing click *Fixed* in the *Controller status box* and press *OK* in the message window.



Once the Trio Project is fixed in controller the following is displayed. Press *OK* to acknowledge the message.



9. After the loading of the Trio Project is done close the connection to the controller using either the disconnect icon  or by going to *Controller – Disconnect*.
10. Exit Motion Perfect 2.
11. Start CIRS Motion Control.

Controller use for both Model 008A (Dynamic Phantom) and Model 008PL (Dynamic Platform)

Repeat the above steps (steps 1 and 2 are not necessary anymore if they were performed once) making sure that the Trio Project, which mentions Model 008PL (Dynamic Platform) is selected in step 7.