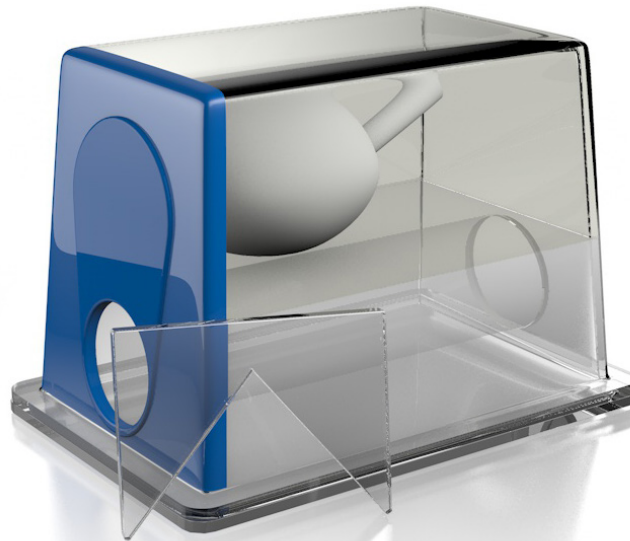


# Ultrasound Prostate Training Phantom

Model 053-I



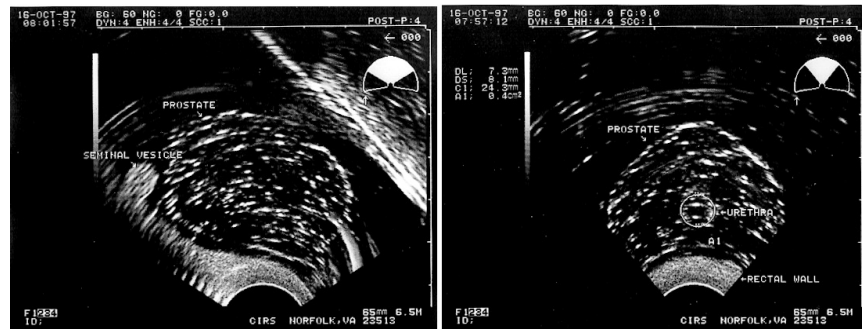
**ZERDINE® Inside**  
A registered trademark of CIRS

## THE IDEAL TRAINING DEVICE FOR PERMANENT SEED IMPLANTATION PROCEDURES

The CIRS Model 053-I Ultrasound Prostate Training Phantom is a disposable phantom developed for practicing permanent seed implantation procedures. It contains several unique features to assist the teaching and learning process.

The simulated perineal membrane permits needle insertion with realistic resistance. In addition, the area below the rectal wall is a clear gel to permit visualization of probe orientation. The prostate is transparent to allow visual verification of seed placement. The phantom also includes a removable pubic arch simulation.

This modification to the CIRS Model 053 phantom was developed with Dr. Peter Grimm and his associates at the Seattle Prostate Institute.



### Features

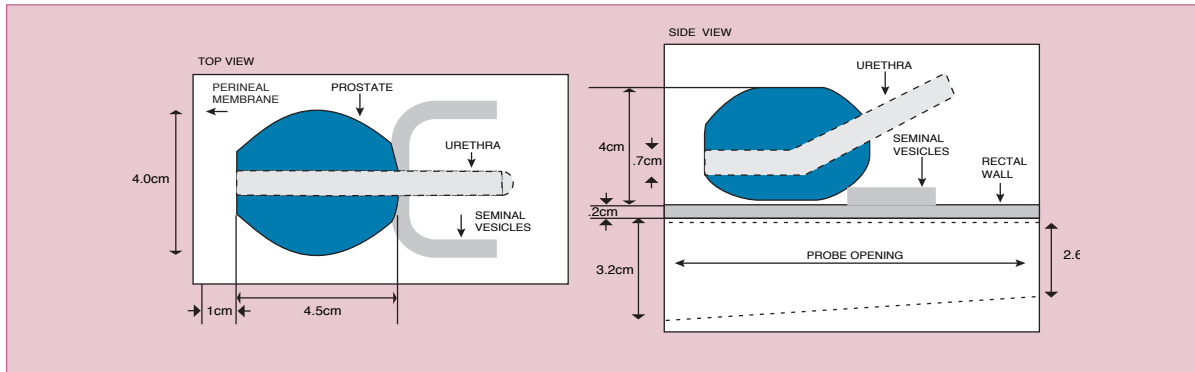
- Perineal membrane for needle insertion with realistic resistance
- Assess image fusion algorithms
- Test new equipment
- Optimize imaging protocols
- Improve performance of freehand abdominal biopsies

900 Asbury Ave • Norfolk, Virginia 23513 • USA  
Tel: 800.617.1177 • 757.855.2765 • Fax: 757.857.0523

**[WWW.CIRSINC.COM](http://WWW.CIRSINC.COM)**

**CIRS**

Tissue Simulation & Phantom Technology



**SPECIFICATIONS**

**CONTAINER**

Dimensions: 11.5 x 7.0 x 9.5 cm  
 Front probe opening: 3.2 cm Ø  
 Rear probe opening: 2.6 cm Ø  
 Material: Clear acrylic

**PERINEAL MEMBRANE**

3 mm thick Z-skin™ elastomer

**BACKGROUND GEL**

Similar to water with very little backscatter or attenuation

**URETHRA**

Dimensions: 0.7 cm Ø  
 Material: Zerdine®<sup>(1)</sup>, low scatter

**SEMINAL VESICLES**

Dimensions: 7 mm Ø x 10 cm long  
 Material: Zerdine, high scatter

**PROSTATE**

Dimensions: 4 x 4.5 x 4 cm  
 Material: Zerdine, low scatter

**RECTAL WALL**

Dimensions: 6 x 11 x 0.2 cm  
 Material: Zerdine, high scatter

**OTHER FEATURES**

Removable pubic arch  
 Note: This phantom not intended to ultrasonically mimic the human prostate.

**MODEL 053-I INCLUDES**

Ultrasound Prostate Training Phantom  
 User Guide  
 6 Month Warranty

<sup>(1)</sup> US Patent # 5196343

**PROSTATE PHANTOM SELECTION GUIDE**

Model	Description	Transducer Type
053S	Prostate Phantom without Lesions	Side-Fire or BiPlane
053L	Prostate Phantom with Lesions	Side-Fire or BiPlane
053L-EF	Prostate Phantom with Lesions for End-Fire Transducer	End-Fire Transducer
053-I	Ultrasound Prostate Training Phantom	Side-Fire or BiPlane

