

Female Ultrasound Training Pelvis

Model 404A



TEACH • TRAIN • PRACTICE

The gynecological ultrasound exam is an important diagnostic tool. Students gain competency with hands-on practice. Unfortunately, access to patients can be limited. The Model 404A Female Ultrasound Training Pelvis facilitates teaching and demonstration of gynecological ultrasound techniques in a non-stressful situation.

Our Model 404A consists of an external female pelvic model containing a uterus, fallopian tubes, ovaries, bladder and rectal landmarks useful for scanning. The phantom has both abdominal and vaginal scanning access allowing a variety of transducer orientations.

The Female Ultrasound Training Pelvis creates a relaxed learning environment for teaching and developing ultrasound examination skills and techniques as well as demonstrating 3D ultrasound capabilities.

Features

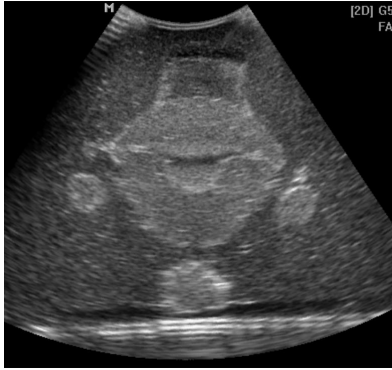
- External anatomy
- Abdominal and vaginal scanning access
- Uterus with endometrium and myometrium
- Ovary with follicles
- Full bladder
- Rectal landmarks
- Realistic Scanning

900 Asbury Ave • Norfolk, Virginia 23513 • USA
Tel: 800.617.1177 • 757.855.2765 • Fax: 757.857.0523

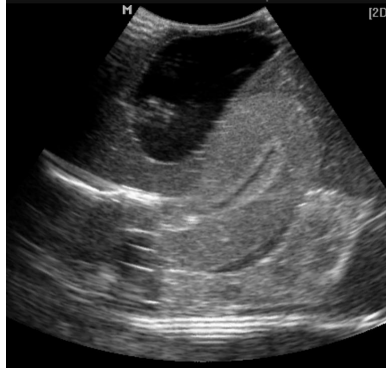
WWW.CIRSINC.COM

CIRS

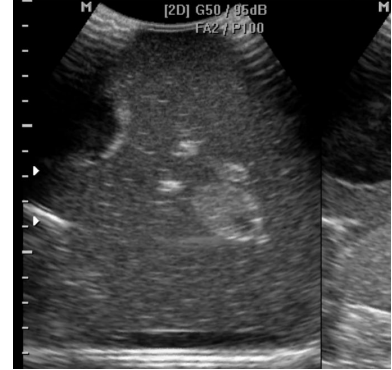
Tissue Simulation & Phantom Technology



Transabdominal of uterus



Trans-vaginal of uterus, bladder and rectum



Ovary with follicles

SPECIFICATIONS

DIMENSIONS	15 cm x 11 cm x 11 cm (5.9" x 4.3" x 4.3")
PHANTOM WEIGHT	2 kg (4.4 lbs.)
MATERIALS	Z-Skin™ elastomer and Zerdine®
INTERNAL STRUCTURE	Vaginal Canal Cervix Uterus with Endometrium, Myometrium and Uterine Cavity Fallopian Tubes Homogeneous Left Ovary Right Ovary containing follicles Iliac Vessels

MODEL 404A INCLUDES

QTY	COMPONENT DESCRIPTION
1	Female Ultrasound Training Pelvis
1	User Guide
-	6-Month Warranty

