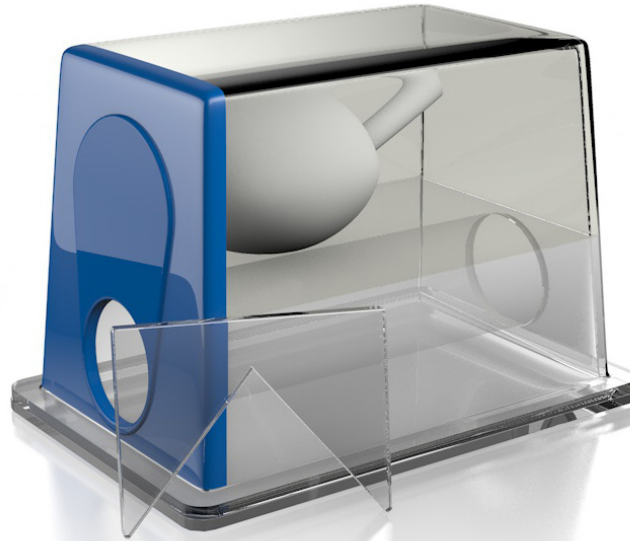


Ultrasound Prostate Training Phantom

Model 053-I



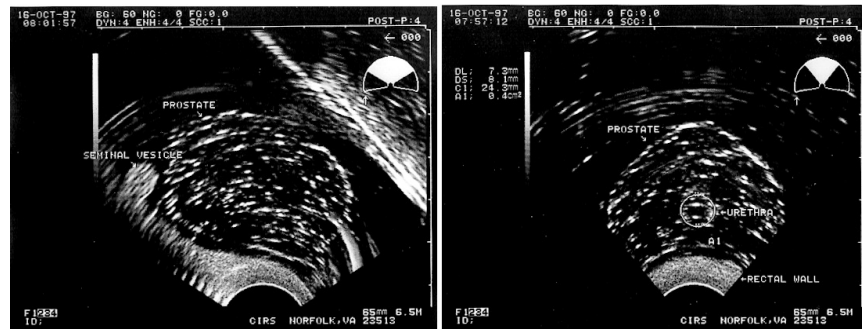
ZERDINE [®] Inside
A registered trademark of CIRS

THE IDEAL TRAINING DEVICE FOR PERMANENT SEED IMPLANTATION PROCEDURES

The CIRS Model 053-I Ultrasound Prostate Training Phantom is a disposable phantom developed for practicing permanent seed implantation procedures. It contains several unique features to assist the teaching and learning process.

The simulated perineal membrane permits needle insertion with realistic resistance. In addition, the area below the rectal wall is a clear gel to permit visualization of probe orientation. The prostate is transparent to allow visual verification of seed placement. The phantom also includes a removable pubic arch simulation.

This modification to the CIRS Model 053 phantom was developed with Dr. Peter Grimm and his associates at the Seattle Prostate Institute.



Features

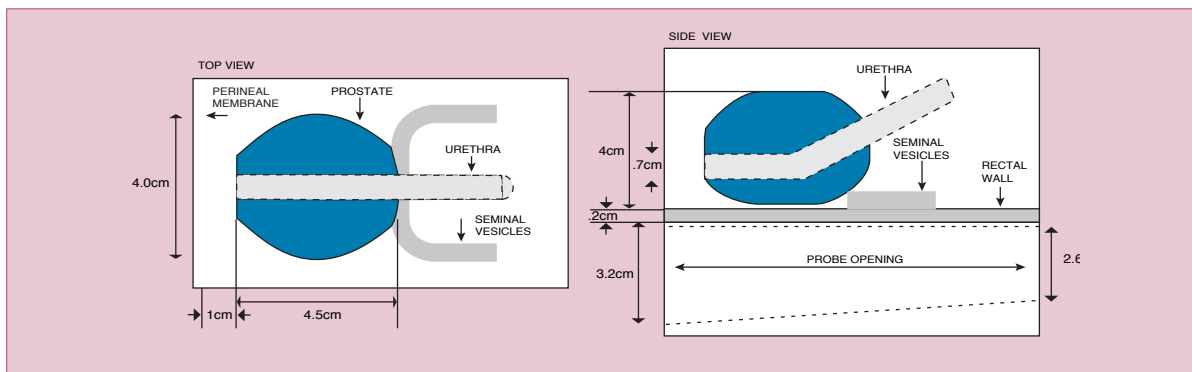
- Perineal membrane for needle insertion with realistic resistance
- Assess image fusion algorithms
- Test new equipment
- Optimize imaging protocols
- Improve performance of freehand abdominal biopsies

900 Asbury Ave • Norfolk, Virginia 23513 • USA
Tel: 800.617.1177 • 757.855.2765 • Fax: 757.857.0523

WWW.CIRSINC.COM

CIRS

Tissue Simulation & Phantom Technology



SPECIFICATIONS

CONTAINER

Dimensions: 11.5 x 7.0 x 9.5 cm
 Front probe opening: 3.2 cm Ø
 Rear probe opening: 2.6 cm Ø
 Material: Clear acrylic

PERINEAL MEMBRANE

3 mm thick Z-skin™ elastomer

BACKGROUND GEL

Similar to water with very little backscatter or attenuation

URETHRA

Dimensions: 0.7 cm Ø
 Material: Zerdine®⁽¹⁾, low scatter

SEMINAL VESICLES

Dimensions: 7 mm Ø x 10 cm long
 Material: Zerdine, high scatter

PROSTATE

Dimensions: 4 x 4.5 x 4 cm
 Material: Zerdine, low scatter

RECTAL WALL

Dimensions: 6 x 11 x 0.2 cm
 Material: Zerdine, high scatter

OTHER FEATURES

Removable pubic arch
 Note: This phantom not intended to ultrasonically mimic the human prostate.

MODEL 053-I INCLUDES

Ultrasound Prostate Training Phantom
 User Guide
 12 Month Warranty*

*Please note: once any device has been inserted into the phantom (such as biopsy needles, localization wires, etc.) the 12 month warranty will not cover claims related to material desiccation or needle tracking.

⁽¹⁾ US Patent # 5196343

PROSTATE PHANTOM SELECTION GUIDE

Model	Description	Transducer Type
053S	Prostate Phantom without Lesions	Side-Fire or BiPlane
053L	Prostate Phantom with Lesions	Side-Fire or BiPlane
053L-EF	Prostate Phantom with Lesions for End-Fire Transducer	End-Fire Transducer
053-I	Ultrasound Prostate Training Phantom	Side-Fire or BiPlane

