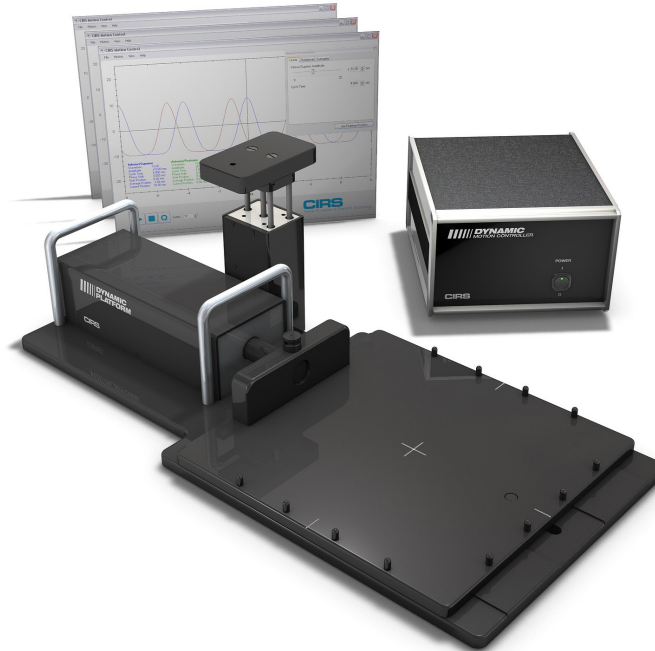


# Dynamic Platform

Model 008PL



## **PROGRAMMABLE MOTION FOR ANY PLATFORM**

The CIRS Dynamic Platform provides an economical, user-friendly solution for the complex tasks associated with tumor motion and patient positioning in radiation therapy.

The platform is made from stiff, low-density plastics. The device enables precisely controlled inferior-superior motion up to 50 mm for any phantom up to 70 lbs. Multiple types of dosimeters and dosimeter arrays including ArcCHECK<sup>®</sup> can be positioned on the platform and used for dose verification of moving target treatment plan. A removable pin system in the main platform allows consistent placement and fixation of almost any phantom and traditional laser alignment marks enable accurate positioning of the entire device. An independently controlled smaller platform provides posterior-anterior surrogate chest wall motion.

The CIRS Dynamic Platform is operated using CIRS Motion Control Software, a user-friendly graphical user interface that can be installed on any computer running Windows platform.

### **Features**

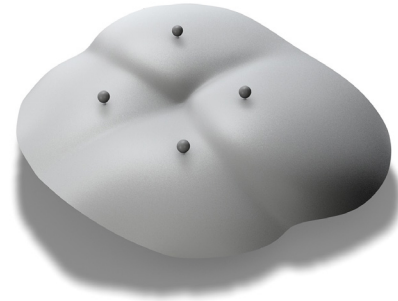
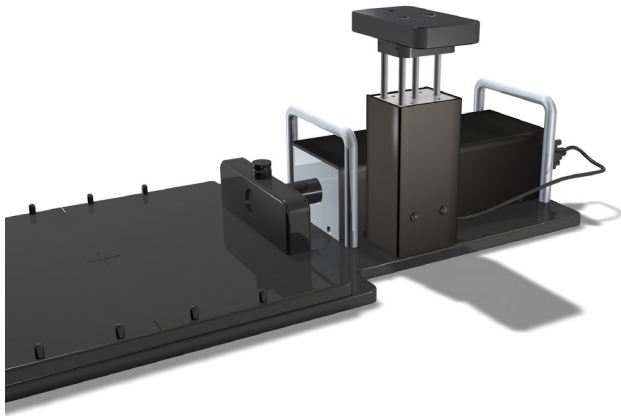
- Move any phantom with sub-millimeter accuracy and reproducibility
- Surrogate and phantom motion fully and independently programmable
- Easy transport, set-up and operation
- Motion software enables different cycles, amplitudes and waveforms
- Surrogate breathing platform accommodates numerous gating devices

900 Asbury Ave • Norfolk, Virginia 23513 • USA  
Tel: 800.617.1177 • 757.855.2765 • Fax: 757.857.0523

**[WWW.CIRSINC.COM](http://WWW.CIRSINC.COM)**

# CIRS

Tissue Simulation & Phantom Technology



The surrogate motion is mechanically independent of platform motion and programmable through the CIRS Motion Control Software. This feature provides even greater flexibility to the clinician and is useful in assessing correlation between surrogate and phantom motion.

Optional chest plate for collecting chest motion and breathing data using an optical tracking system

**SPECIFICATIONS**

<b>Overall Dimensions:</b>	71 x 35 x 28 cm
<b>Overall Weight:</b>	17.2 kg
<b>Power:</b>	110-250 VAC, 50/60 Hz
<b>Platform Dimensions:</b>	35 x 35 cm
<b>Max. Platform Load:</b>	32 kg (70 lbs)
<b>Amplitude, IS:</b>	± 25 mm
<b>Amplitude, AP Surrogate:</b>	±25 mm
<b>Max. Surrogate Platform Load</b>	5.4 kg (12 lbs.)
<b>Motion Accuracy:</b>	±0.1 mm
<b>Cycle Time:</b>	1 - ∞ (adjusted based on amplitude)
<b>Editable built-in waveforms:</b>	sin(t), 1-2cos4(t), 1-2cos6(t), sawtooth, sharkfin

**CIRS Motion Control Software: Minimum Hardware Requirements**

- Windows XP® or later (32 and 64 bit)
- Pentium 3® or equivalent
- 512 MB RAM
- 2 MB of available disk space

**MODEL 008PL INCLUDES**

Part No.	Qty	Component Description
008PL	1	Dynamic Platform
	1	Dynamic Motion Controller with firmware installed (110 - 220V, 50 - 60Hz)
	1	Actuator attached to platform
	1	3rd axis gating device (mounted to actuator)
	1	CIRS Motion Control Software USB
	1	Cable kit: USB 3.0 Gigabit Ethernet Adapter, Network cable CAT5e, 75', DB 25 male to male cable, DB 9 male to male cable, Power cord
	2	2 Amp fast acting fuses
	16	Platform pins
	1	User's guide
	1	Carry Case

**OPTIONAL ITEMS**

<b>008A-125</b>	Chest plate with reflective 11.5 mm tracker balls
-----------------	---

