

Dental & Diagnostic Head Phantom

Model 711-HN

ATOM_{MAX}



USER GUIDE

CIRS

900 Asbury Ave • Norfolk, Virginia 23513 • USA • Tel: 757-855-2765 • WWW.CIRSIINC.COM

MODEL 711-HN INCLUDES:

- **HEAD:**
Internal structures include:
brain, skeletal anatomy with cortical and trabecular separation, larynx, trachea, sinus and nasal cavities, teeth with dentine, enamel and nerve structure, primary maxillary and mandibular nerves
- **STAND:**
Sturdy double braced, chrome plated tripod, height adjustable, from 800 - 1200 mm
- **CARRY CASE:**
Head: Foam lined carry case
Stand: Nylon padded tote



OPTIONAL

- **MODEL 038-30**
SRS Frame Support Cups, Set of 4

OBJECTIVE

The purpose of this Dental Head Phantom is to provide a standard of reference in diagnostic radiology. This phantom is designed to assist technical and clinical staff in playing “what if” in the selection, monitoring, training and verification of scanning parameters common to most radiological: dental x-ray, panoramic, CT, cone beam CT as well any other Radiological procedures required fine anatomical defects.

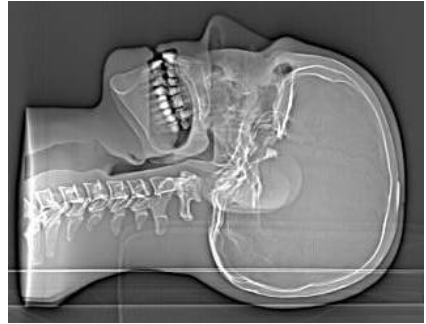
DESCRIPTION OF THE PHANTOM

The phantom is made of Tissue Simulating hard epoxy resins that accurately mimic the x-ray attenuation properties of actual human tissues for both CT and Therapy energy ranges (50 keV - 25 MeV).

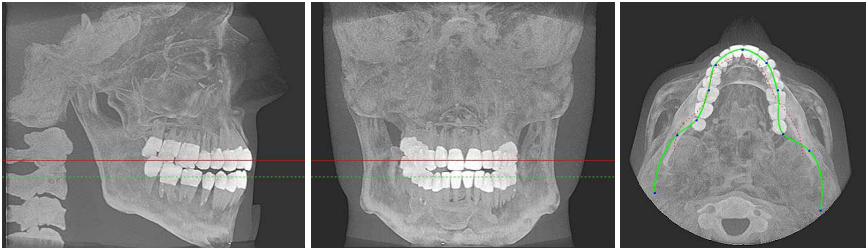
The Phantom includes brain, all bony anatomy with cortical and trabecular separation, larynx, trachea, sinus, fully opened nasal cavities and teeth with dentine, enamel and root structure.

USE OF THE PHANTOM

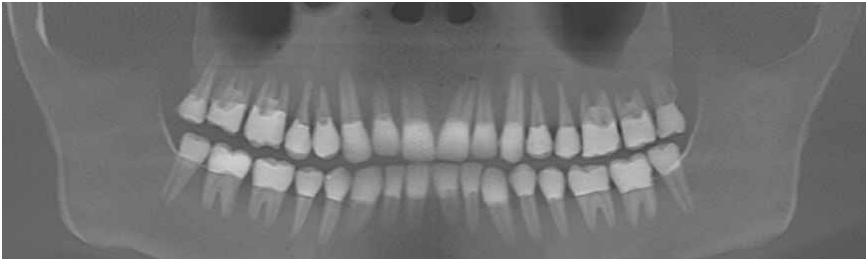
The suggested use is a basic test protocol. The phantom should be scanned using the same x-ray technical factors as would be used on a patient. Each user of the phantom may find additional uses and CIRS urges to share findings with others when possible and appropriate.



Sagittal View



Lateral, Anterior Posterior, Superior Inferior, and Orthopantomogram 3D cone beam ct reconstructions



CARE AND HANDLING

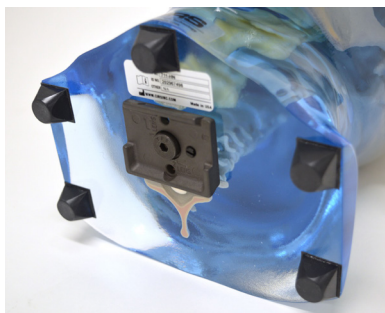
The phantom should be stored in a safe place when not in use, preferably within its respective case. The phantom may be cleaned with mild soap and water.

Technical questions should be referred to CIRS customer service at (800) 617-1177.



3D Reconstruction

TRIPOD ASSEMBLY



Quick connect plate on the phantom



Quick connect on tripod



Place quick connect on tripod, make sure it is secure prior to release



To adjust the positioning of the head, turn lever until head is placed in desired position.



Positioning feet are used to position the phantom on flat surfaces. Note: the positioning feet are not removable.

WARRANTY

All standard CIRS products and accessories are warranted by CIRS against defects in material and workmanship for a period as specified below. During the warranty period, the manufacturer will repair or, at its option, replace, at no charge, a product containing such defect provided it is returned, transportation prepaid, to the manufacturer. Products repaired in warranty will be returned transportation prepaid.

There are no warranties, expressed or implied, including without limitation any implied warranty of merchantability or fitness, which extend beyond the description on the face hereof. This expressed warranty excludes coverage of, and does not provide relief for, incidental or consequential damages of any kind or nature, including but not limited to loss of use, loss of sales or inconvenience. The exclusive remedy of the purchaser is limited to repair, recalibration, or replacement of the product at manufacturer's option.

This warranty does not apply if the product, as determined by the manufacturer, is defective because of normal wear, accident, misuse, or modification.

NON-WARRANTY SERVICE

If repairs or replacement not covered by this warranty are required, a repair estimate will be submitted for approval before proceeding with said repair or replacement.

RETURNS

If you are not satisfied with your purchase for any reason, please contact Customer Service or your local distributor prior to returning the product. Visit <https://www.cirsinc.com/distributors/> to find your local distributor. Call 800-617-1177, email rma@cirsinc.com, or fax an RMA request form to 757-857-0523. CIRS staff will attempt to remedy the issue via phone or email as soon as possible. If unable to correct the problem, a return material authorization (RMA) number will be issued. Non-standard or "customized" products may not be returned for refund or exchange unless such product is deemed by CIRS not to comply with documented order specifications. You must return the product to CIRS within 30 calendar days of the issuance of the RMA. All returns should be packed in the original cases and or packaging and must include any accessories, manuals and documentation that shipped with the product. The RMA number must be clearly indicated on the outside of each returned package. CIRS recommends that you use a carrier that offers shipment tracking for all returns and insure the full value of your package so that you are completely protected if the shipment is lost or damaged in transit. If you choose not to use a carrier that offers tracking or insure the product, you will be responsible for any loss or damage to the product during shipping. CIRS will not be responsible for lost or damaged return shipments. Return freight and insurance is to be pre-paid.

WITH RMA NUMBER, ITEMS MAY BE RETURNED TO:

CIRS
Receiving
900 Asbury Ave
Norfolk, Virginia, 23513 USA

PRODUCT	WARRANTY PERIOD
Model 711-HN - Dental & Diagnostic Head Phantom	60 Months

**COMPUTERIZED IMAGING
REFERENCE SYSTEMS, INC.**

900 Asbury Ave
Norfolk, Virginia 23513 • USA

TOLL FREE 800.617.1177

TEL: 757.855.2765

FAX: 757.857.0523

EMAIL: admin@cirsinc.com

www.cirsinc.com

Technical Assistance

1.800.617.1177

