

Female Ultrasound Training Pelvis

Model 404A



TEACH • TRAIN • PRACTICE

The gynecological ultrasound exam is an important diagnostic tool. Students gain competency with hands-on practice. Unfortunately, access to patients can be limited. The Model 404A Female Ultrasound Training Pelvis facilitates teaching and demonstration of gynecological ultrasound techniques in a non-stressful situation.

Our Model 404A consists of an external female pelvic model containing a uterus, fallopian tubes, ovaries, bladder and rectal landmarks useful for scanning. The phantom has both abdominal and vaginal scanning access allowing a variety of transducer orientations.

The Female Ultrasound Training Pelvis creates a relaxed learning environment for teaching and developing ultrasound examination skills and techniques as well as demonstrating 3D ultrasound capabilities.

Features

- External anatomy
- Abdominal and vaginal scanning access
- Uterus with endometrium and myometrium
- Ovary with follicles
- Full bladder
- Rectal landmarks
- Realistic Scanning

900 Asbury Ave • Norfolk, Virginia 23513 • USA
Tel: 800.617.1177 • 757.855.2765 • Fax: 757.857.0523

WWW.CIRSINC.COM

CIRS

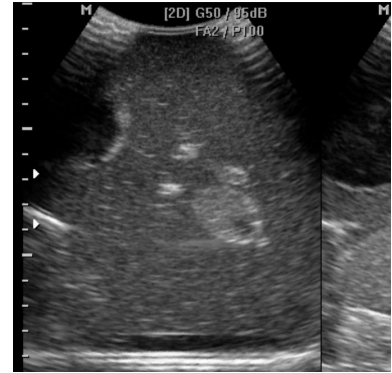
Tissue Simulation & Phantom Technology



Transabdominal of uterus



Trans-vaginal of uterus, bladder and rectum



Ovary with follicles

SPECIFICATIONS

DIMENSIONS	15 cm x 11 cm x 11 cm (5.9" x 4.3" x 4.3")
PHANTOM WEIGHT	2 kg (4.4 lbs.)
MATERIALS	Z-Skin™ elastomer and Zerdine®
INTERNAL STRUCTURE	Vaginal Canal Cervix Uterus with Endometrium, Myometrium and Uterine Cavity Fallopian Tubes Homogeneous Left Ovary Right Ovary containing follicles Iliac Vessels

MODEL 404A INCLUDES

QTY	COMPONENT DESCRIPTION
1	Female Ultrasound Training Pelvis
1	User Guide
-	12-Month Warranty*

*Please note: once any device has been inserted into the phantom (such as biopsy needles, localization wires, etc.) the 12 month warranty will not cover claims related to material desiccation or needle tracking.

