

Vascular Access Training Phantoms

Model 072 Series



DEVELOP SKILLS FOR ULTRASOUND GUIDED INJECTION AND VENIPUNCTURE TECHNIQUES IN A NON-STRESSFUL ENVIRONMENT

The CIRS Vascular Access Training Phantoms are designed to provide a realistic training medium for needle insertion. The phantoms are made from a durable elastomeric compound mimicking the tactile feel and puncture resistance of soft tissue. This material has realistic acoustic properties allowing imaging of the simulated vessels under ultrasound. The vessels can be accessed from top and bottom surfaces and can be easily replenished using a syringe.

CIRS offers three Vascular Access models with varied feature sets to best serve your needs. For assistance in choosing between models, refer to the comparison chart on the next page. The phantoms require no special handling and will not dry out. The phantoms also include start up accessories.

“Dynamic and static US guidance during central venous catheter insertion was associated with improved in-hospital first cannulation rates and overall success rates of insertions by junior residents.”

Dodge, Kelly L., et al.
“Use of Ultrasound Guidance Improves Central Venous...”
Journal of Ultrasound in Medicine

Features

- Teach ultrasound scan techniques
- Demonstrate and practice various insertion techniques
- Experiment with new procedures and evaluate new devices
- Teach vein recognition through palpation

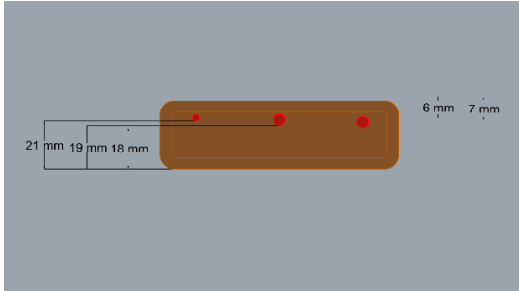
900 Asbury Ave • Norfolk, Virginia 23513 • USA
Tel: 800.617.1177 • 757.855.2765 • Fax: 757.857.0523

WWW.CIRSINC.COM

CIRS

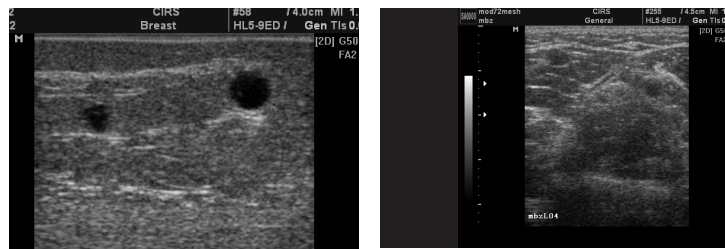
Tissue Simulation & Phantom Technology

MODEL 072

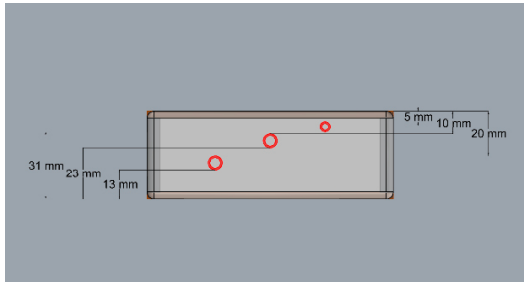


Includes 3 mm vessel and 5 mm vessel (straight)
Middle 5 mm vessel bifurcation

DIMENSIONS	100 mm x 175 mm x 30 mm
PHANTOM WEIGHT	2 lbs. (0.7 kg)

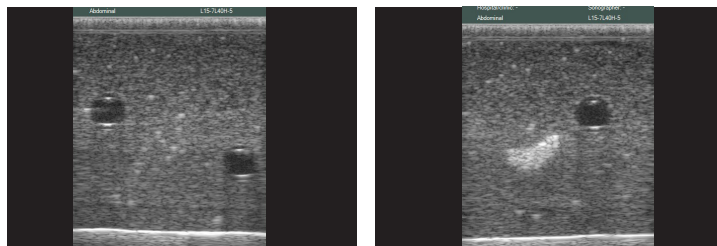


MODEL 072B



Features one 1/8" vessel with 1/16" wall thickness;
two 3/16" vessels with 1/16" wall thickness

DIMENSIONS	150 mm x 100 mm x 40 mm
PHANTOM WEIGHT	1.5 lbs. (0.66 kg)



FEATURES	072	072B
Z-Skin™ enables self-healing	✓	✓
Develop hand-eye coordination in non-stressful environment	✓	✓
Provides realistic training medium for needle insertion	✓	✓
Luer Lock fitting allows easy refilling & simulated flow		✓
Hyperechoic lesions for nerve block injection procedures		✓
Vessel wall for realistic needle resistance		✓
Varied vessel shapes including bifurcation	✓	

MODELS 072 AND 072B INCLUDE	072 QTY	072B QTY
Vascular Access Training Phantom	1	1
Bottle Simulated Blood (125 ml)	1	1
Surface Conditioner (powder)	1	1
Syringe	1	1
Needle	1	1
Carry Case	1	-
Cardboard shipping container	-	1
User Guide	1	1
12 Month Warranty*	1	1

*Please note: once any device has been inserted into the phantom (such as biopsy needles, localization wires, etc.) the 12 month warranty will not cover claims related to material desiccation or needle tracking.

