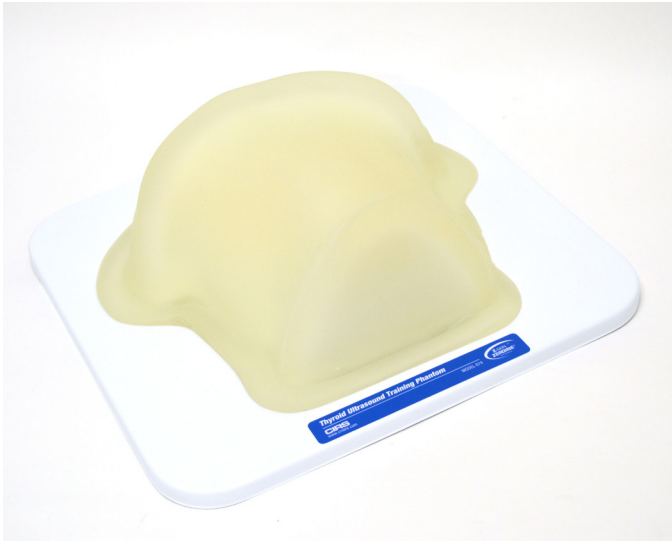


Thyroid Ultrasound Training Phantom

Model 074



USER GUIDE

CIRS

900 Asbury Ave • Norfolk, Virginia 23513 • USA • Tel: 757-855-2765 • WWW.CIRSI.COM

OBJECTIVE

Thyroid nodules occur in 50% of the world's population with incidence increasing with age. Ultrasound guided biopsies of the thyroid yield more accurate results than free-hand techniques.¹

The CIRS Thyroid Ultrasound Training Phantom is a disposable training tool and practice medium for ultrasound guided thyroid biopsy procedures. The phantom also serves as an excellent teaching tool for identification of various types of thyroid nodules and training on proper thyroid scanning techniques.

The Thyroid Ultrasound Training Phantom creates a relaxed learning environment in which to develop skills.

DESCRIPTION OF THE PHANTOM

This phantom contains a slightly enlarged thyroid gland positioned within an anthropomorphic neck. The chin and clavicle are provided as external anatomical landmarks. The phantom provides the trachea, internal jugular vein and common carotid artery as internal anatomical landmarks. Each thyroid lobe contains one cyst and one isoechoic stiff lesion. Various nodules can be manufactured within the thyroid gland on a custom basis. All materials are formulated to be ultrasonically realistic.

SPECIFICATIONS

OVERALL DIMENSIONS:	31 cm x 32.5 cm (12.2" x 12.8")
WEIGHT:	9.4 lbs (3.5 kg)
VOLUME	35cc (nominal)
MATERIALS:	Zerdine® Encased in Proprietary Elastomer

The Model 074 Contains:

- Internal Jugular Vein
- Common Carotid Artery
- Trachea
- Thyroid Contains:
 - (2) Cysts
 - (2) Isoechoic, Stiff Lesions

MODEL 074 INCLUDES

QTY	COMPONENT DESCRIPTION
1	Thyroid Ultrasound Training Phantom
1	Surface Conditioner
1	User Guide
-	12-Month Warranty*

*Please note: once any device has been inserted into the phantom (such as biopsy needles, localization wires, etc.) the 12 month warranty will not cover claims related to material desiccation or needle tracking.

MODEL 074 FEATURES

- Internal and external anatomical landmarks
- Ultrasonically realistic materials
- Simple cysts and isoechoic, stiff lesions

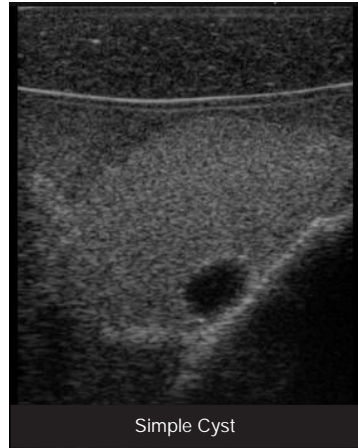
BENEFITS OF THE PHANTOM

- Train how to perform thyroid ultrasound examination
- Practice ultrasound guided biopsy procedures
- Develop hand-eye coordination in non-stressful environment
- Demonstrate and practice various insertion techniques
- Experiment with new procedures and evaluate new devices

USE OF THE PHANTOM

Although this product has been evaluated and found to be safe if used as intended, it is always best to avoid repeated or prolonged skin contact with materials not intended for use on skin. It is recommended to handle the phantom and its accessories using protective gloves.

- Apply coupling gel and scan as you would using standard patient procedure.
- Using ultrasonic imaging guidance, thyroid nodules in the phantom may be accessed and punctured surface, following normal procedures.



CARE AND HANDLING

1. For maximum product lifetime, store the phantom in standard room temperature and humidity. Sub-freezing temperatures should be avoided during shipping, as the freeze-thaw cycle may damage housing integrity and displace the targets. High temperatures may accelerate desiccation. If signs of weight loss are seen (such as a sunken scanning surface), contact CIRS for assistance.
2. Phantom can be cleaned with mild soap and water.
3. Avoid solvent based or abrasive cleaning agents.
4. This phantom is not intended for palpation. This will damage the phantom.
5. This phantom is a shelf-life item. For peak performance, the phantom should be used within the warranty period.
6. Technical questions should be referred to CIRS customer service at (800) 617-1177.

Please note: Each phantom is individually hand crafted and as such will have minor variations and anomalies. Our QA system has established processes to review these various anomalies to ensure they do not jeopardize the utility of the phantom. Minor surface blemishes (as shown below), creases or mold seams on phantom surface will not adversely affect ultrasonic scans.



REFERENCE

1. Cerutti JM, Delcelo R, Amadei MJ, Nakabashi C, Maciel RM, Peterson B, Shoemaker J, Riggins GJ. "A preoperative diagnostic test that distinguishes benign from malignant thyroid carcinoma based on gene expression." J Clin Invest. 2004 Apr; 113(8): 1234-42.

WARRANTY

All standard CIRS products and accessories are warranted by CIRS against defects in material and workmanship for a period as specified below. During the warranty period, the manufacturer will repair or, at its option, replace, at no charge, a product containing such defect provided it is returned, transportation prepaid, to the manufacturer. Products repaired in warranty will be returned transportation prepaid.

There are no warranties, expressed or implied, including without limitation any implied warranty of merchantability or fitness, which extend beyond the description on the face hereof. This expressed warranty excludes coverage of, and does not provide relief for, incidental or consequential damages of any kind or nature, including but not limited to loss of use, loss of sales or inconvenience. The exclusive remedy of the purchaser is limited to repair, recalibration, or replacement of the product at manufacturer's option.

This warranty does not apply if the product, as determined by the manufacturer, is defective because of normal wear, accident, misuse, or modification.

NON-WARRANTY SERVICE

If repairs or replacement not covered by this warranty are required, a repair estimate will be submitted for approval before proceeding with said repair or replacement.

RETURNS

If you are not satisfied with your purchase for any reason, please contact Customer Service or your local distributor prior to returning the product. Visit <https://www.cirsinc.com/distributors/> to find your local distributor. Call 800-617-1177, email rma@cirsinc.com, or fax an RMA request form to 757-857-0523. CIRS staff will attempt to remedy the issue via phone or email as soon as possible. If unable to correct the problem, a return material authorization (RMA) number will be issued. Non-standard or "customized" products may not be returned for refund or exchange unless such product is deemed by CIRS not to comply with documented order specifications. You must return the product to CIRS within 30 calendar days of the issuance of the RMA. All returns should be packed in the original cases and or packaging and must include any accessories, manuals and documentation that shipped with the product. The RMA number must be clearly indicated on the outside of each returned package. CIRS recommends that you use a carrier that offers shipment tracking for all returns and insure the full value of your package so that you are completely protected if the shipment is lost or damaged in transit. If you choose not to use a carrier that offers tracking or insure the product, you will be responsible for any loss or damage to the product during shipping. CIRS will not be responsible for lost or damaged return shipments. Return freight and insurance is to be pre-paid.

WITH RMA NUMBER, ITEMS MAY BE RETURNED TO:

CIRS
Receiving
900 Asbury Ave,
Norfolk, Virginia, 23513 USA

PRODUCT	WARRANTY PERIOD
Model 074 - Thyroid Ultrasound Training Phantom	12 Months*

*Please note: once any device has been inserted into the phantom (such as biopsy needles, localization wires, etc.) the 12 month warranty will not cover claims related to material desiccation or needle tracking.

CIRS

**COMPUTERIZED IMAGING
REFERENCE SYSTEMS, INC.**

900 Asbury Ave
Norfolk, Virginia 23513 • USA

TOLL FREE 800.617.1177

TEL: 757.855.2765

FAX: 757.857.0523

EMAIL: admin@cirsinc.com

www.cirsinc.com

Technical Assistance

1.800.617.1177

