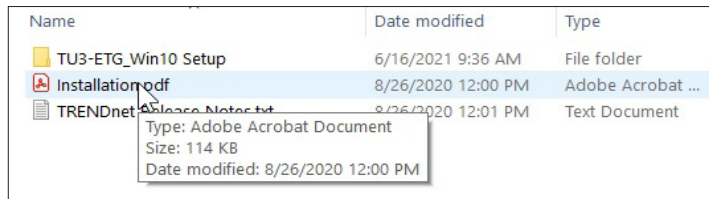


Setup notes for Dynamic Phantoms with controller connecting to a PC using an Ethernet connection:

The following are the recommended steps to install the “USB to Network Adapter” that was shipped with this phantom. The new Network Connection must be setup as a Static IP address in order for the PC to communicate with the motion controller of the phantom.

Note: Steps 5-8 should be followed if the “PC Internal Network Adapter” is used instead of the “USB to Network Adapter”.

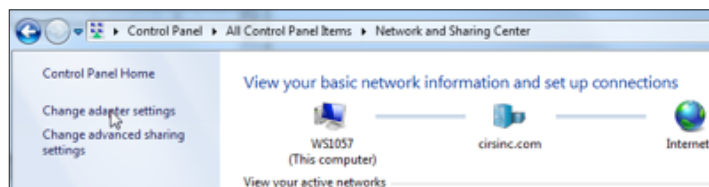
1. To install the necessary driver, unzip the “USB-to-Network Adapter” folder found on the provided USB drive or download the zipped folder from the CIRS website. Unzip to a known location and follow instructions from “Instructions.pdf” document.



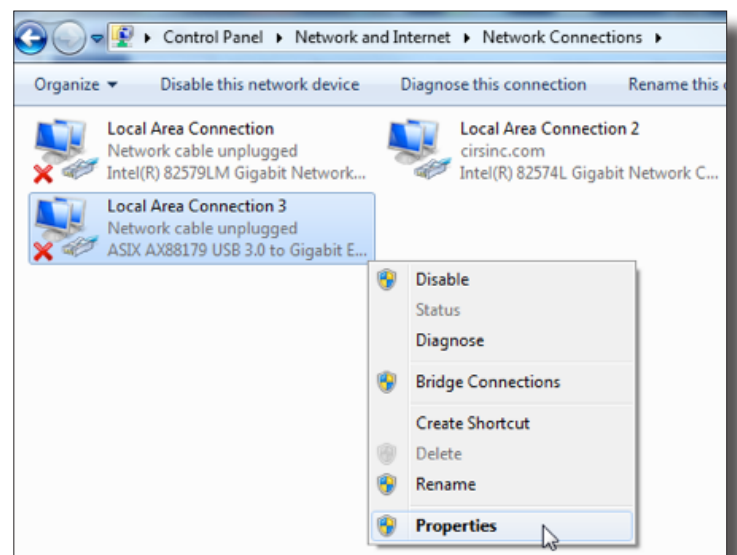
Note: The provided “USB to Network Adapter” can act as Plug and Play device on some PC but CIRS recommends doing the installation of the driver as outlined above.

2. Follow the on screen steps and acknowledge all the messages related to driver’s installation. Once the driver installation is finished, plug the “USB-to-Network Adapter” into your PC’s USB port and acknowledge the Windows installation message. Exit the “USB-to-Network Adapter Software” menu by clicking Exit.

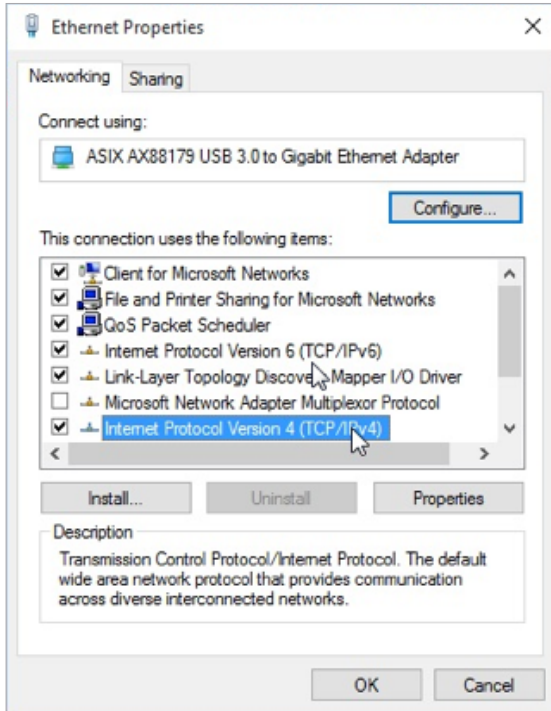
3. From the Control Panel, open the Network and Sharing Center and then select “Change adapter settings”.



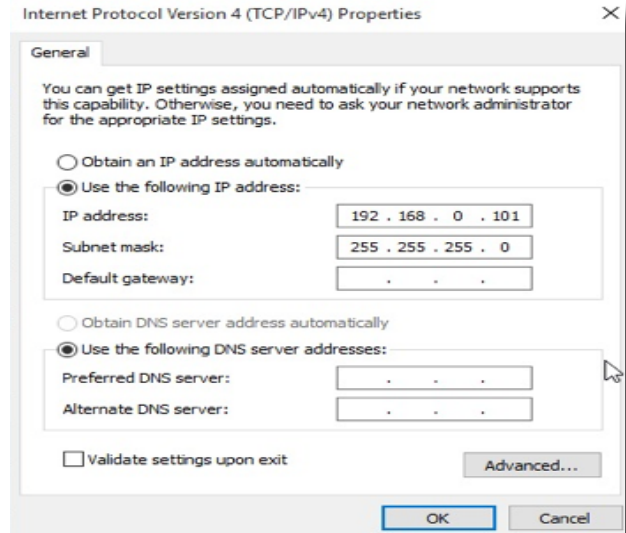
4. Providing that the installation of the “USB-to-Network Card” was successful, the newly installed Network Adapter should show as “ASIX AX88179 USB 3.0 to Gigabit Ethernet Adapter”. Select it’s Properties using the right mouse click menu as shown below.



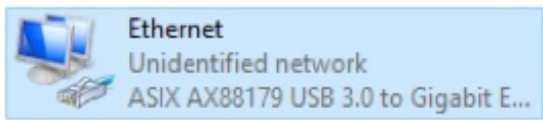
5. Select Internet Protocol Version 4 (TCP/IPv4) and click on properties



6. In the internet Protocol Version 4 (TCP/IPv4) properties window, change from default “Obtain an IP address automatically” to “Use the following IP address:” Enter “192.168.0.101” as the IP address and “255.255.255.000” as the Subnet mask. *Note: If an IP address conflict occurs because IP address 192.168.0.101 is already assigned to another Network Adapter, the user can try any other IP address between 192.168.0.102 and 192.168.0.249.*



7. Once the IP address is entered, click OK. Connect the PC to the Controller using the provided Ethernet cable by inserting one end of the cable in the controller’s Ethernet port and the other one in the “USB-to-Network Adapter”. Power on the controller. To check that the PC to controller connection was successful, ensure the icon of the “ASIX AX88179 USB 3.0 to Gigabit Ethernet Adapter” in the Control Panel matches the image below. Network Connection can be renamed using the right mouse click menu.



8. A more in depth check of the PC-to-controller communication can be done by running a “ping command” in Command Prompt as seen in the image below. To ping the controller, type “ping 192.168.0.250” and press enter. Ping certifies IP-level connectivity to another TCP/IP device. If you receive Ping statistics for IP address 192.168.0.250 (controller IP address) the communication connection between the PC and controller was successful.

